

Digital Appendix TRAIN₄Positivity – Development and Pilot Evaluation of a Mobile-Based Training
of Positivity Bias at the Level of Action Tendencies

Appendix K7 Testing of Assumptions of Multilevel Modeling

Appendix K7.1 Change of Outcomes Over Time – Before Dropouts

Figure K7.1.1

Change of Current Mood (Positive Valence) Over Time Before n = 6 Exclusions



Figure K7.1.2

Change of Current Mood (Energetic Arousal) Over Time Before n = 6 Exclusions

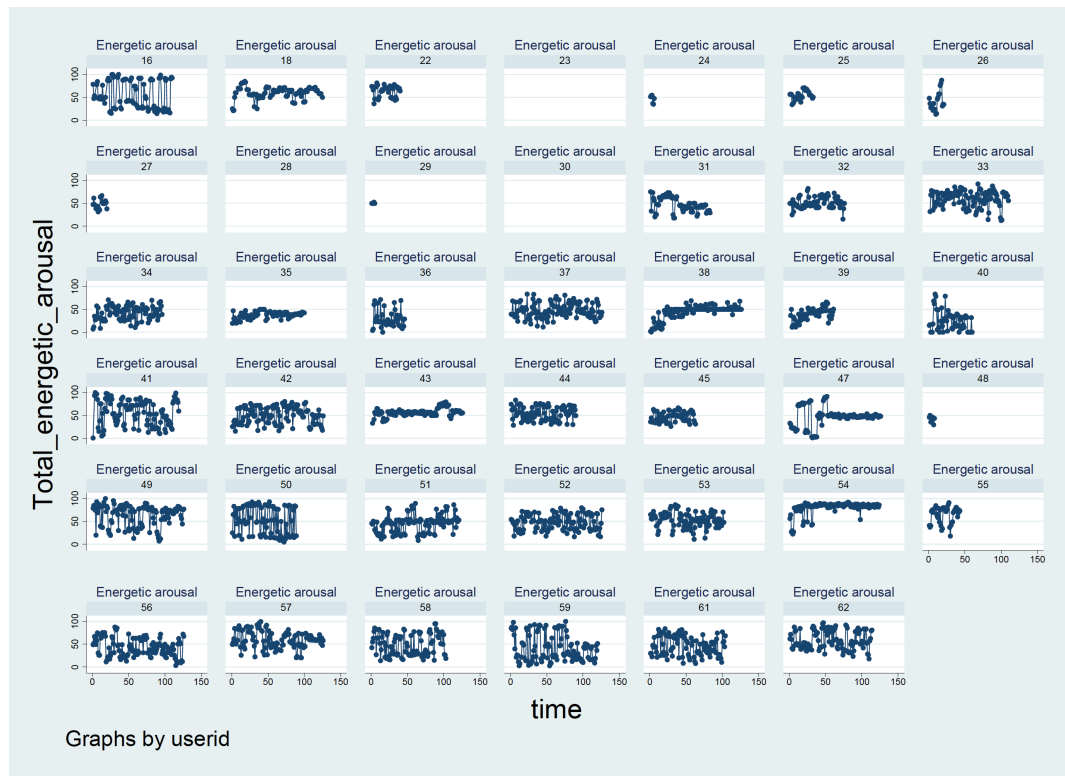


Figure K7.1.3

Change of Current Mood (Calmness) Over Time Before n = 6 Exclusions

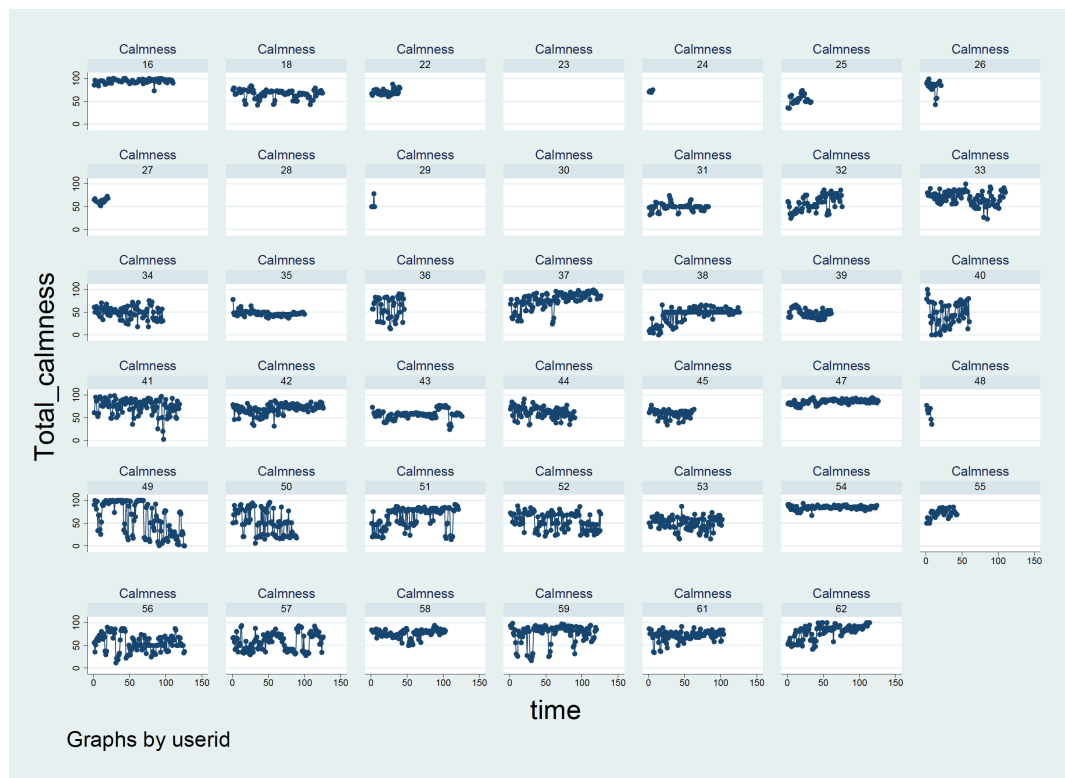


Figure K7.1.4

Change of End-of-Day Measures (Well-Being) Over Time Before n = 8 Exclusions

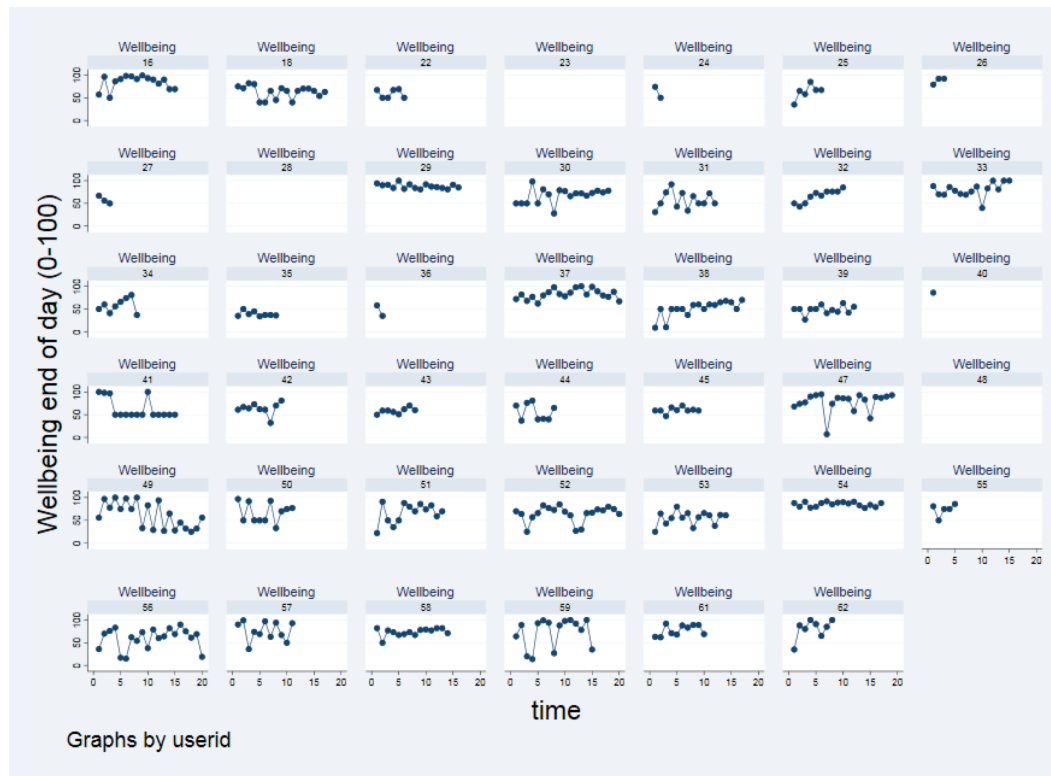


Figure K7.1.5

Change of End-of-Day Measures (Ability to Distance From Negative Stimuli) Over Time Before $n = 8$

Exclusions

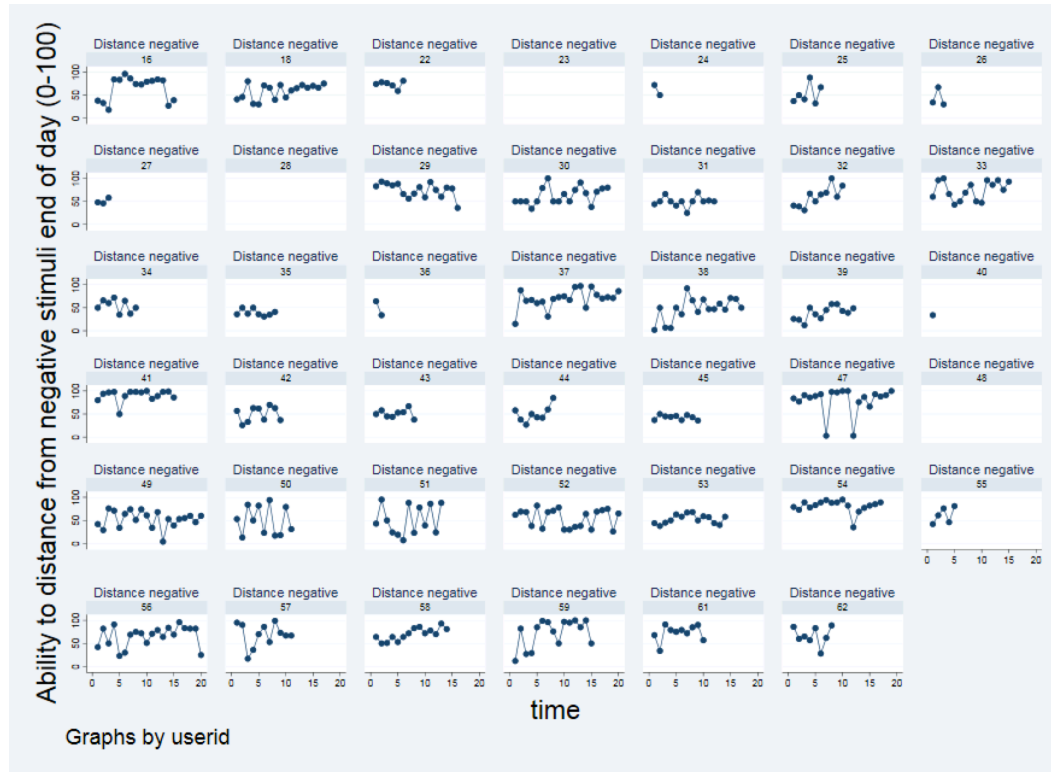
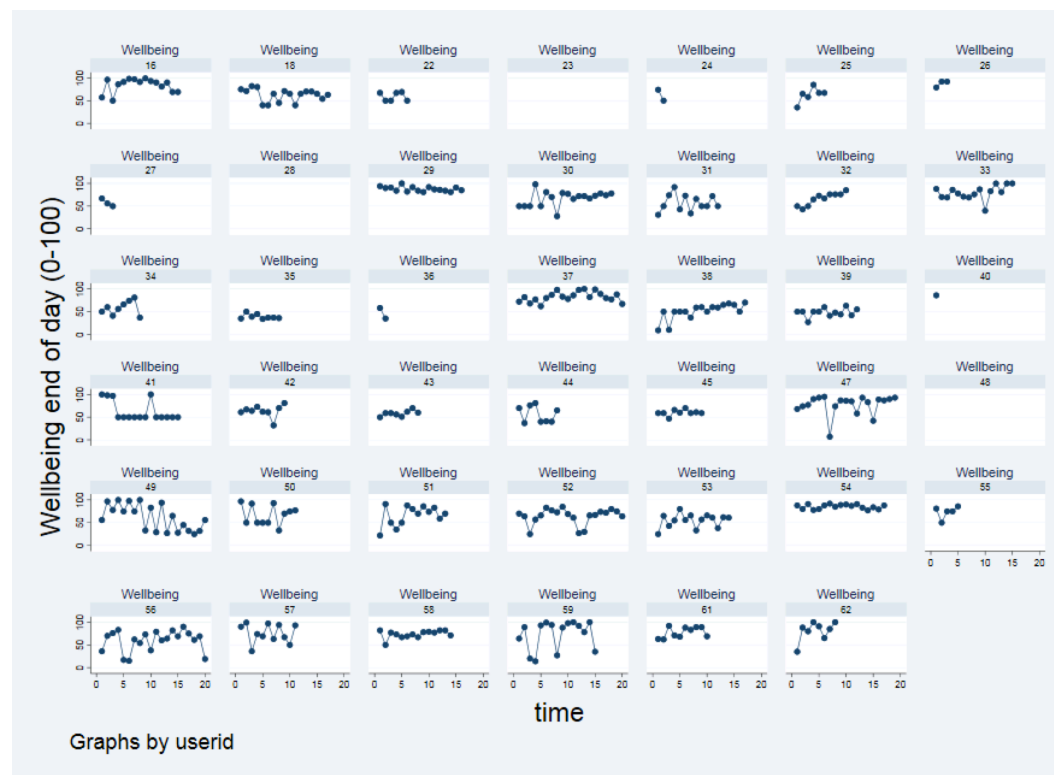


Figure K7.1.6

Change of End-of-Day Measures (Ability to Get Affected by Positive Stimuli) Over Time Before $n = 8$

Exclusions



Appendix K7.2 Linearity

Figure K7.2.1

Scatter Plot for Linearity for Current Mood – Positive Valence

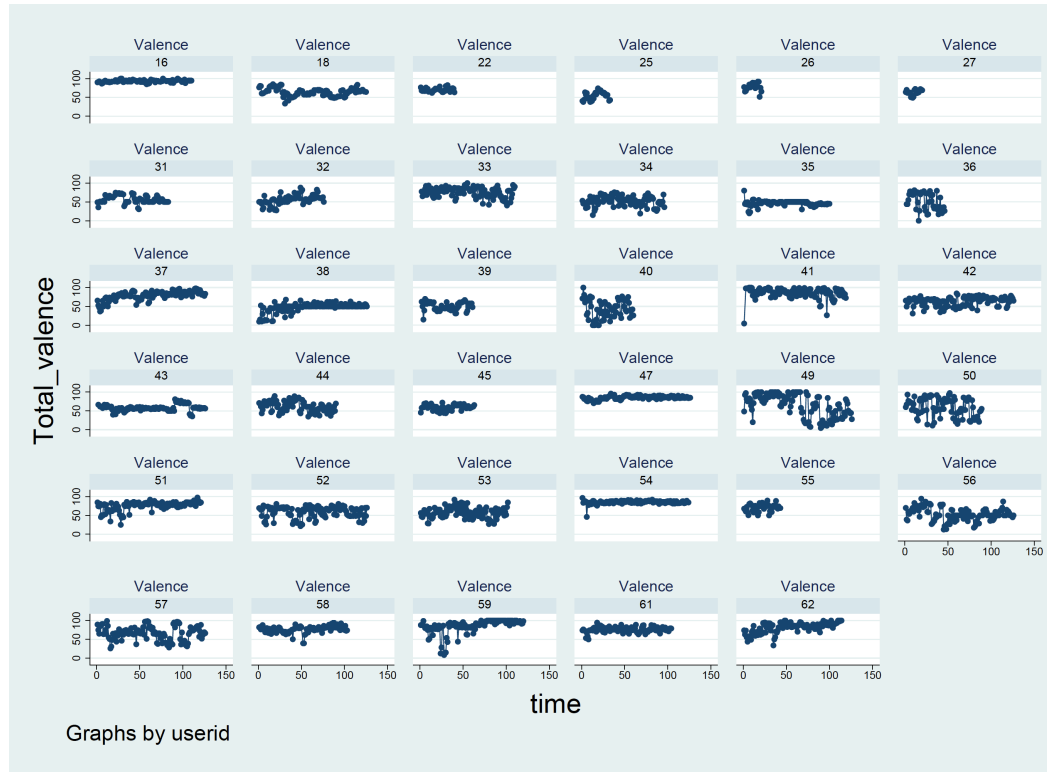


Figure K7.2.2

Scatter Plot for Linearity for Current Mood – Energetic Arousal

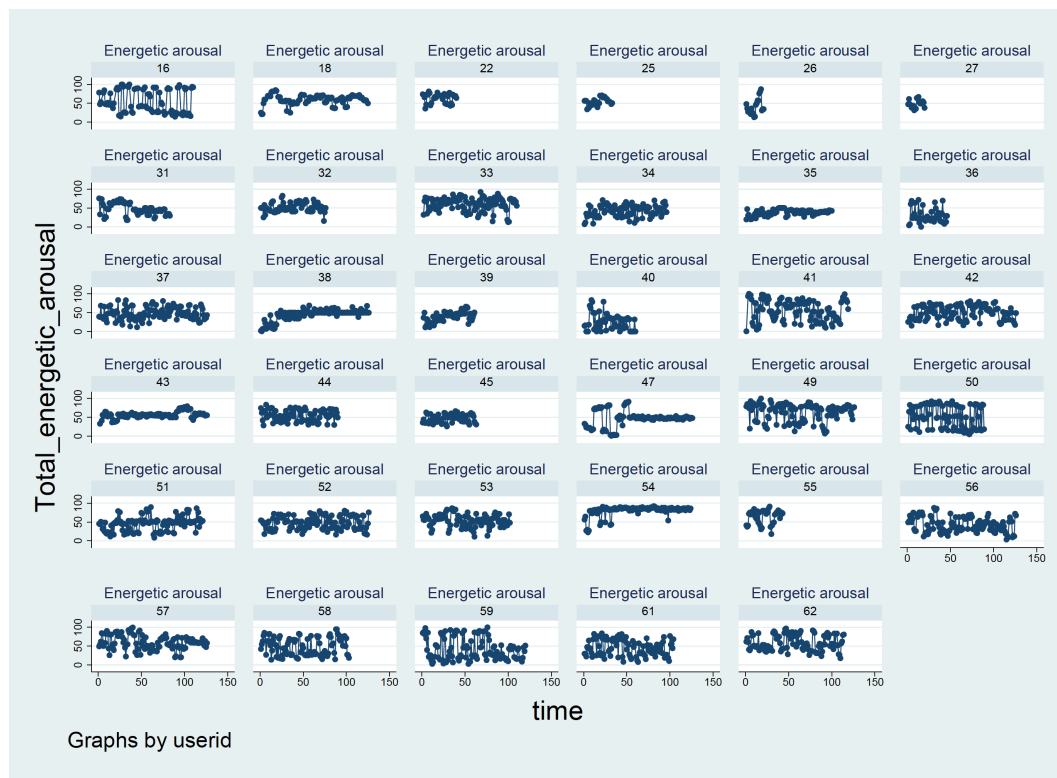


Figure K7.2.3

Scatter Plot for Linearity for Current Mood – Calmness

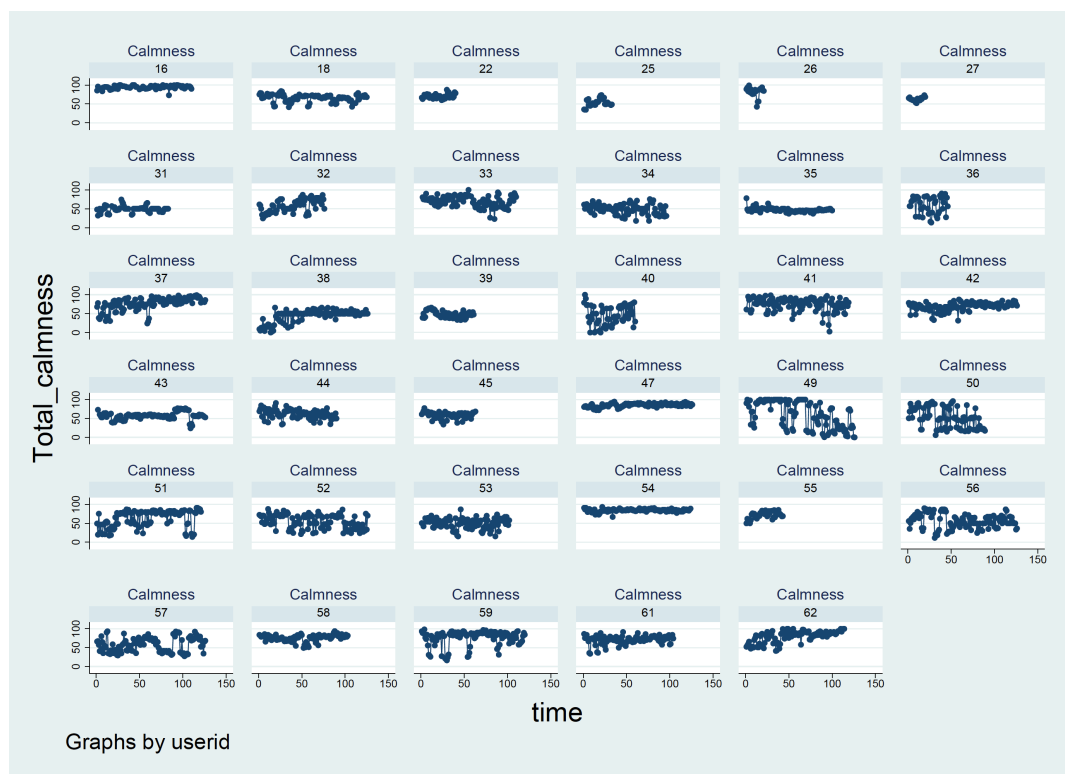


Figure K7.2.4

Scatter Plot for Linearity for End-of-Day Measures – Well-Being

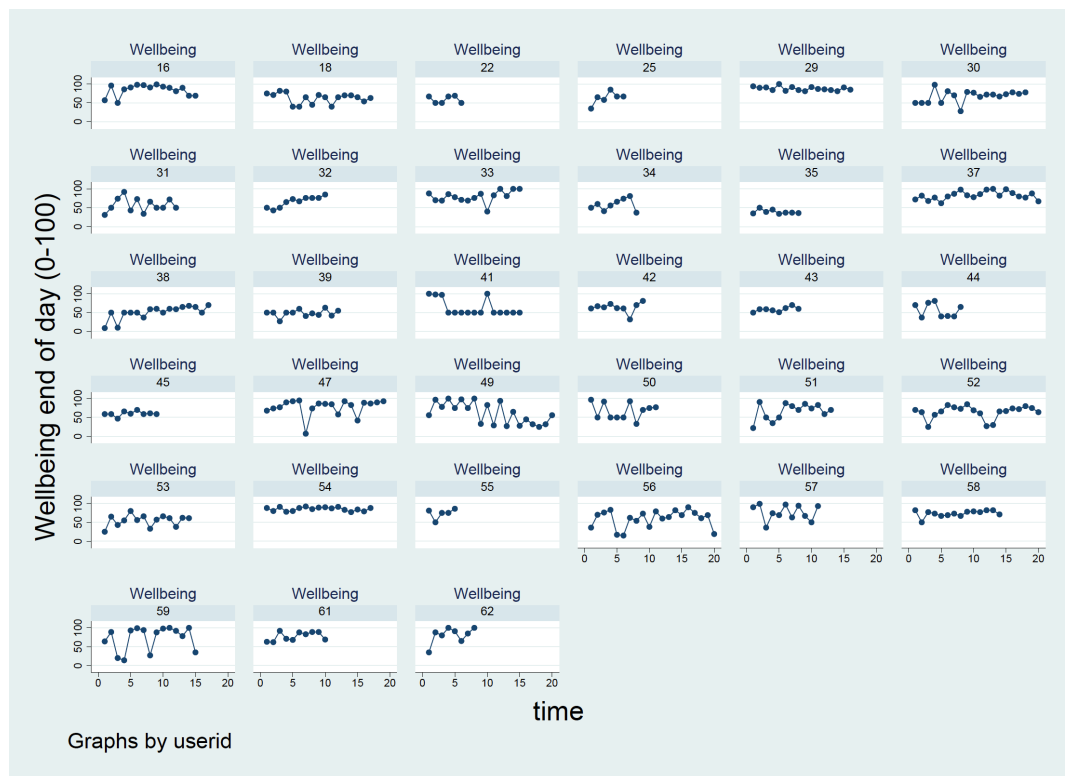


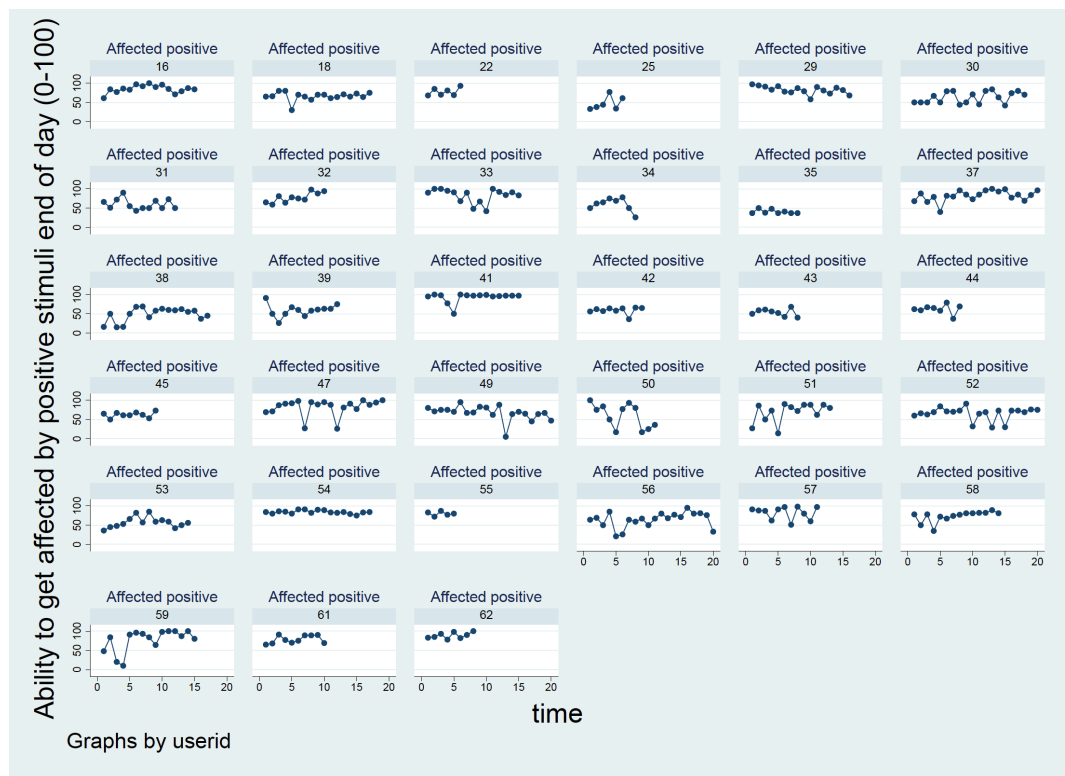
Figure K7.2.5

Scatter Plot for Linearity for End-of-Day Measures – Ability to Distance From Negative Stimuli



Figure K7.2.6

Scatter Plot for Linearity for End-of-Day Measures – Ability to Get Affected by Positive Stimuli



Appendix K7.3 Normality of Residuals

Figure K7.3.1

Scatter Plot of Standardized Residuals for Current Mood – Positive Valence

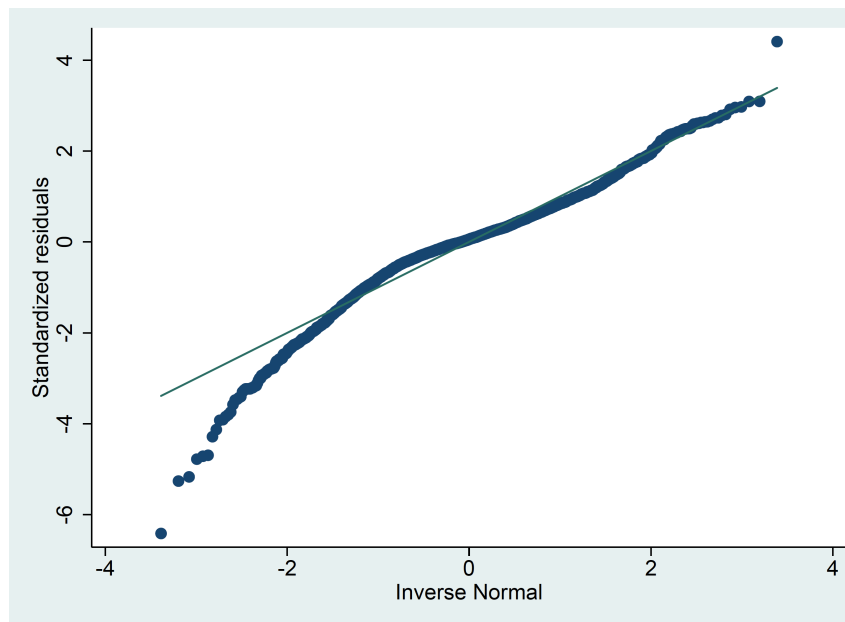


Figure K7.3.2

Scatter Plot of Standardized Residuals for Current Mood – Energetic Arousal

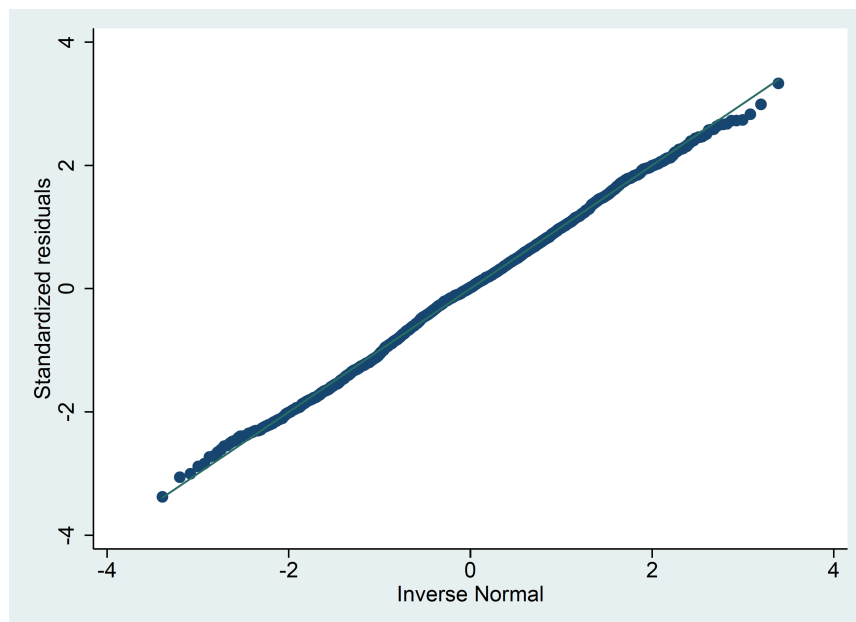


Figure K7.3.3

Scatter Plot of Standardized Residuals for Current Mood – Calmness

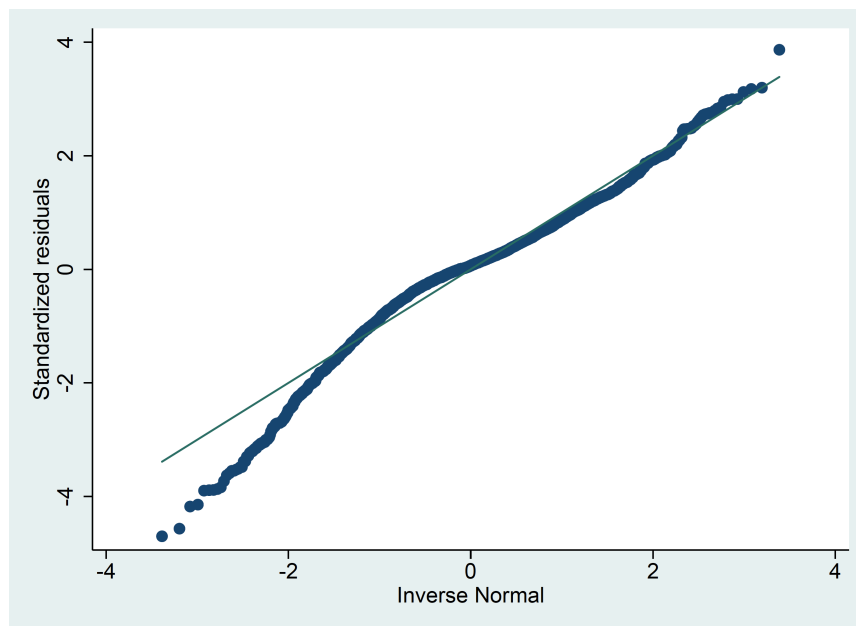


Figure K7.3.4

Scatter Plot of Standardized Residuals for End-of-Day Measures – Well-Being

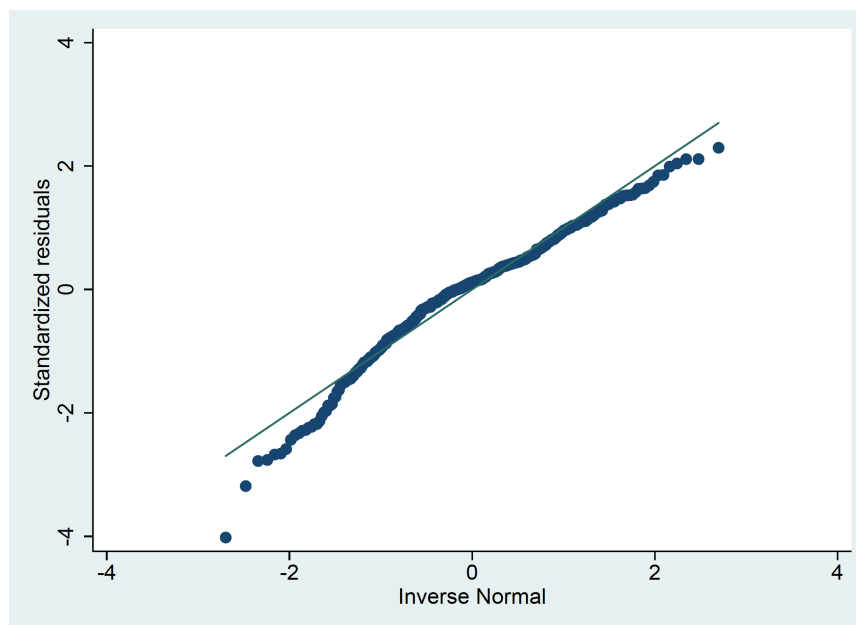


Figure K7.3.5

Scatter Plot of Standardized Residuals for End-of-Day Measures – Ability to Distance From Negative Stimuli

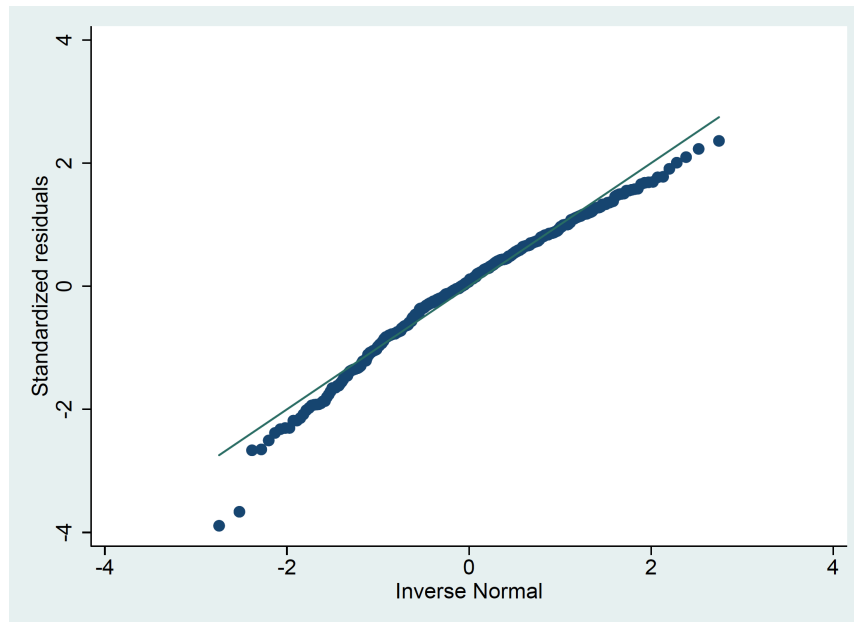


Figure K7.3.6

Scatter Plot of Standardized Residuals for End-of-Day Measures – Ability to Get Affected by Positive Stimuli

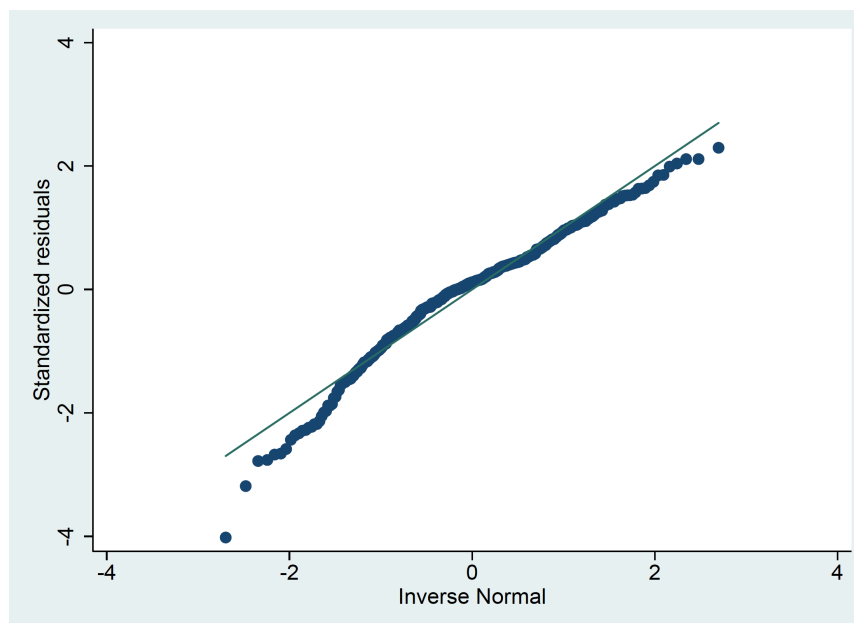


Figure K7.3.7

Histograms of Residuals at All Levels for Current Mood – Positive Valence

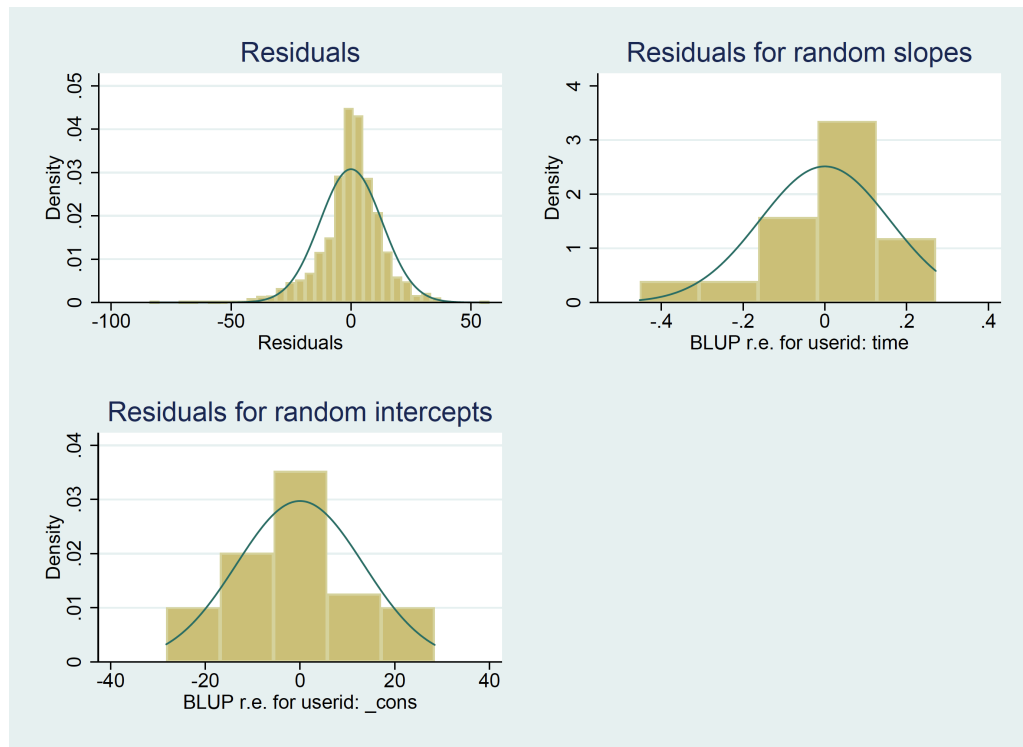


Figure K7.3.8

Histograms of Residuals at All Levels for Current Mood – Energetic Arousal

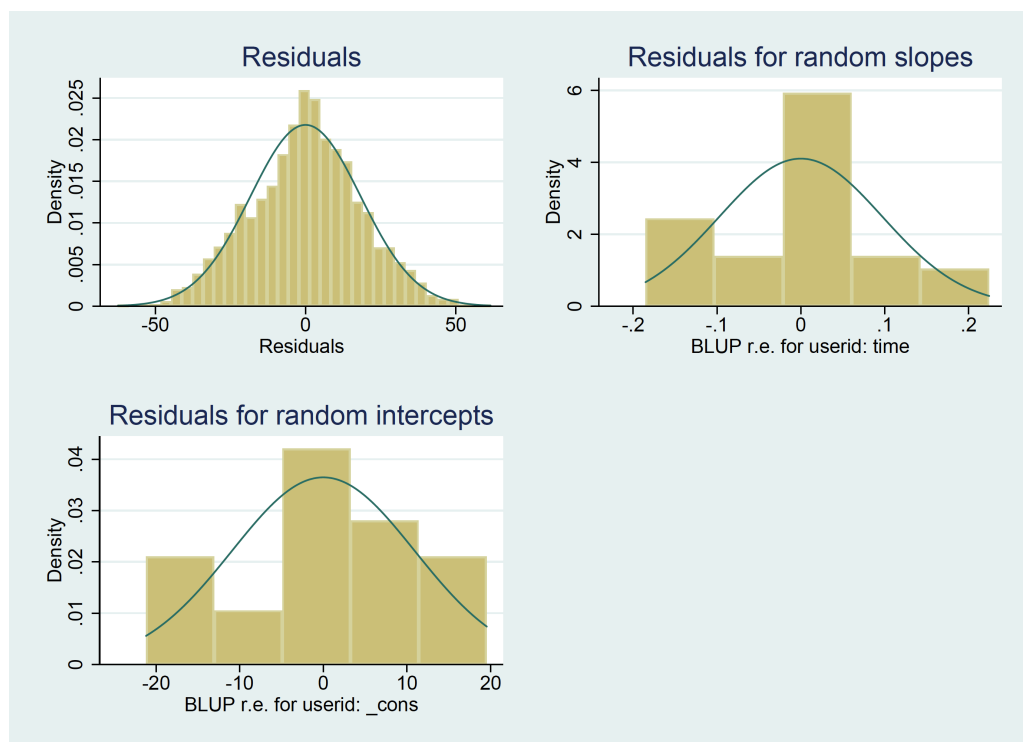


Figure K7.3.9

Histograms of Residuals at All Levels for Current Mood – Calmness

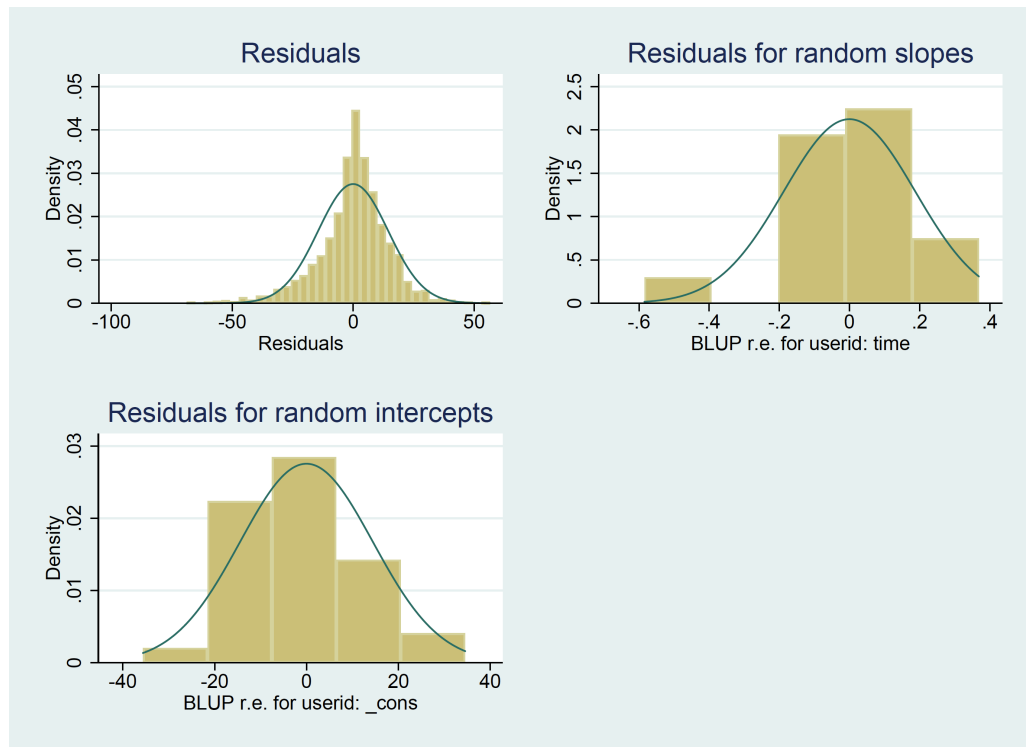


Figure K7.3.10

Histograms of Residuals at All Levels for End-of-Day Measures – Well-Being

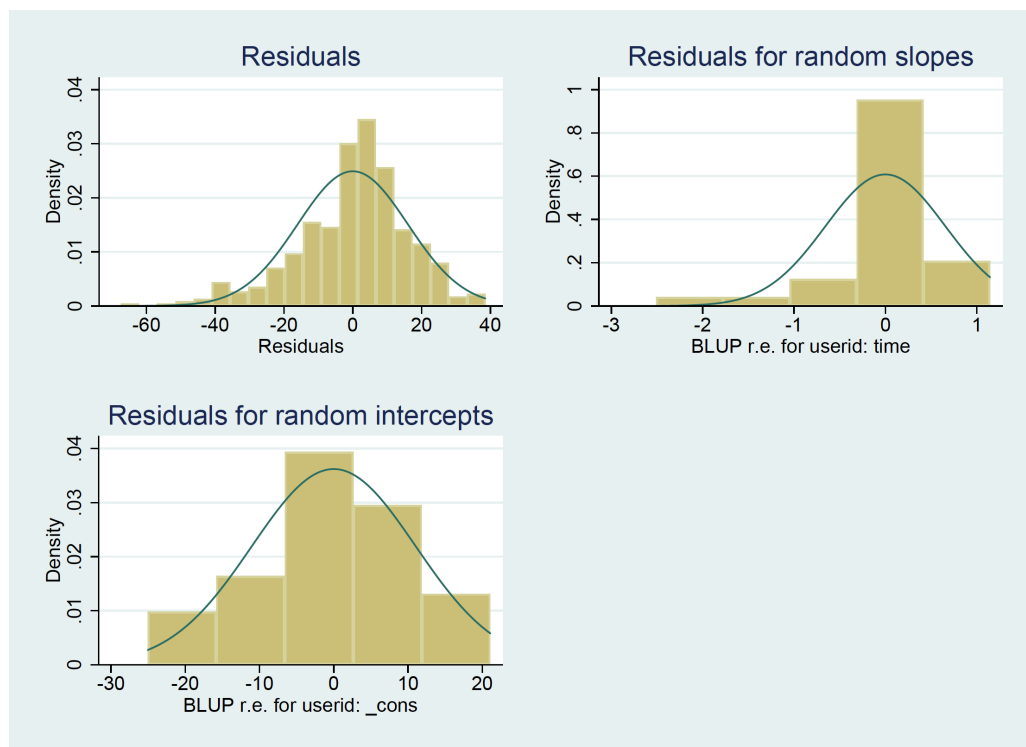


Figure K7.3.11

Histograms of Residuals at All Levels for End-of-Day Measures – Ability to Distance From Negative Stimuli (Only Two Levels of Residuals due to Random-Intercept Model With Best Model Fit)

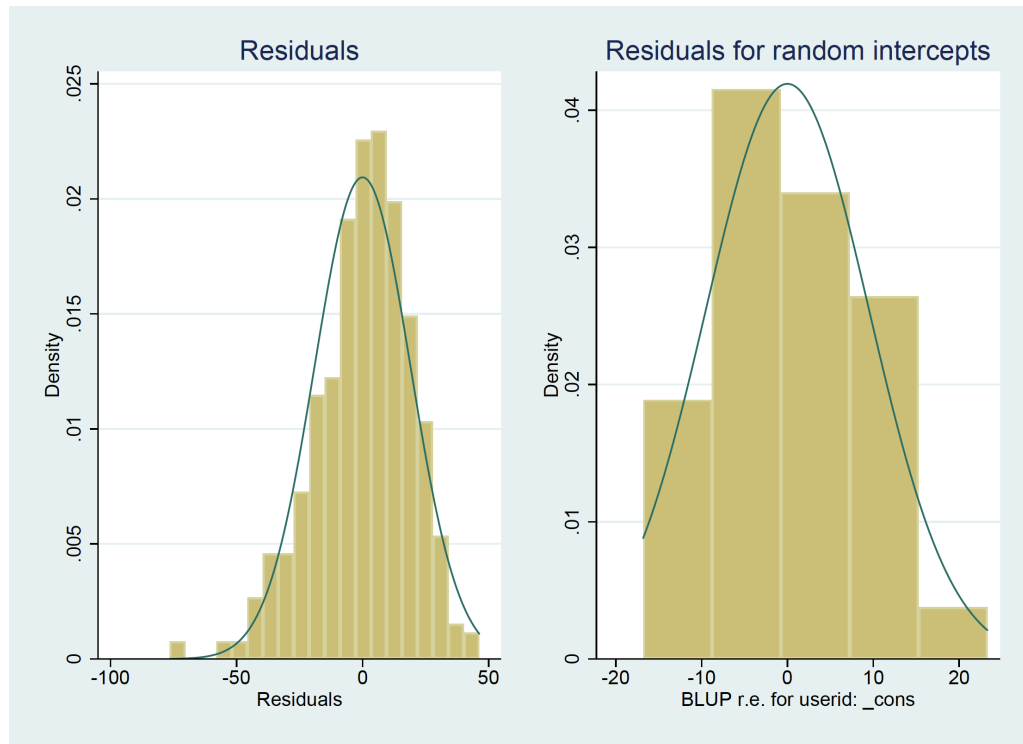
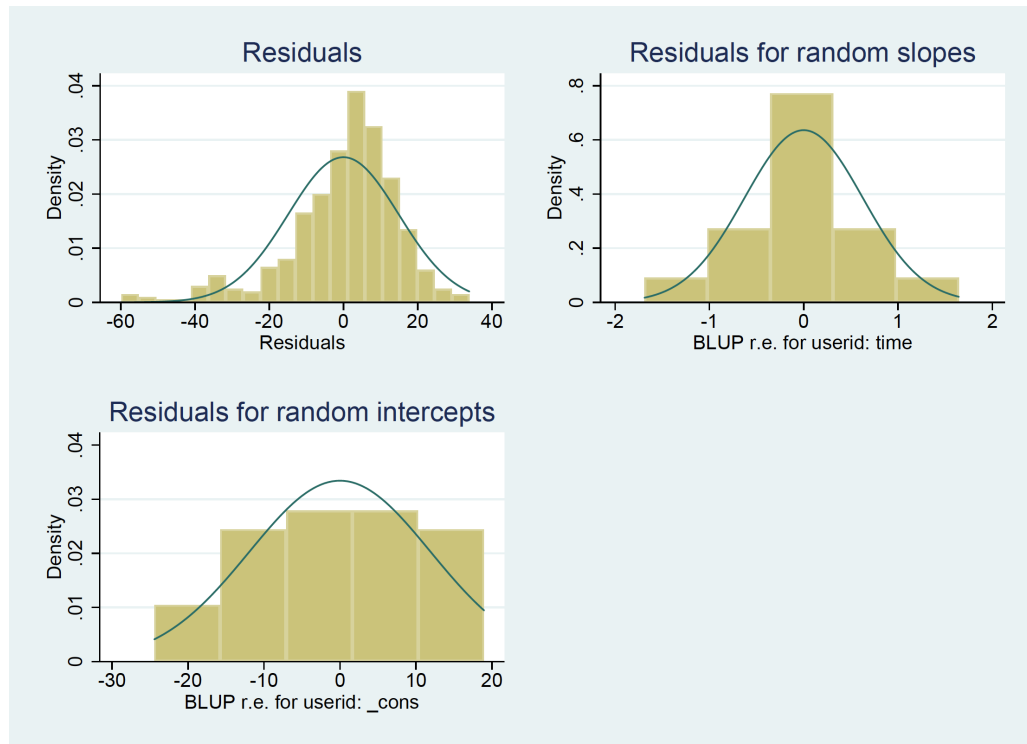


Figure K7.3.12

Histograms of Residuals at All Levels for End-of-Day Measures – Ability to Get Affected by Positive Stimuli



Appendix K7.4 Homoscedasticity

Figure K7.4.1

Scatter Plot of (Standardized) Residuals and Predicted/Fitted Values for Current Mood – Positive Valence

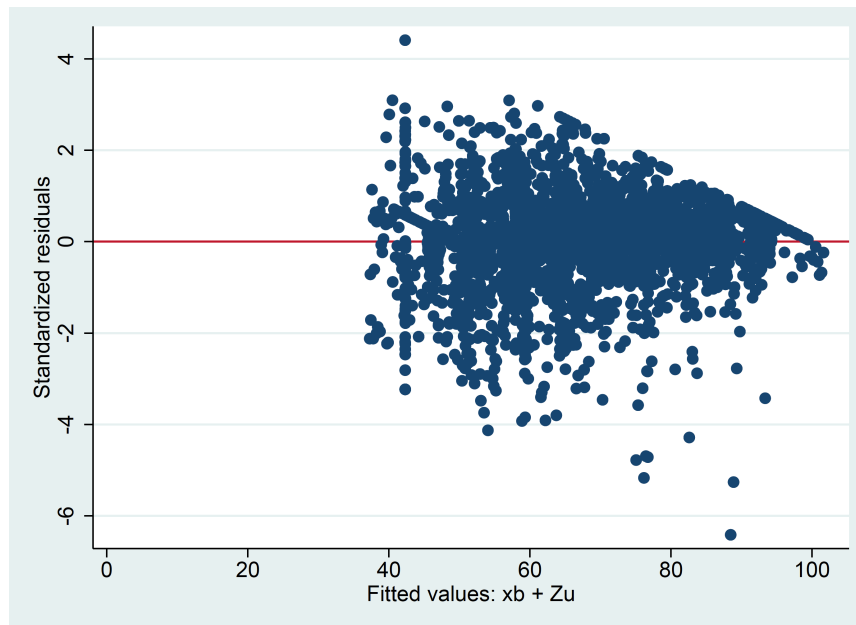


Figure K7.4.2

Scatter Plot of (Standardized) Residuals and Predicted/Fitted Values for Current Mood – Energetic Arousal

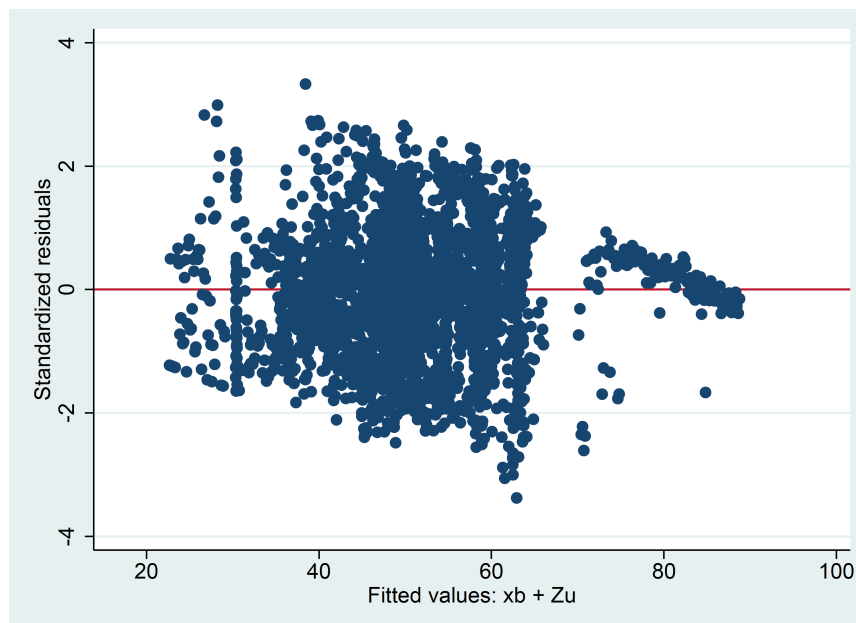


Figure K7.4.3

Scatter Plot of (Standardized) Residuals and Predicted/Fitted Values for Current Mood – Calmness

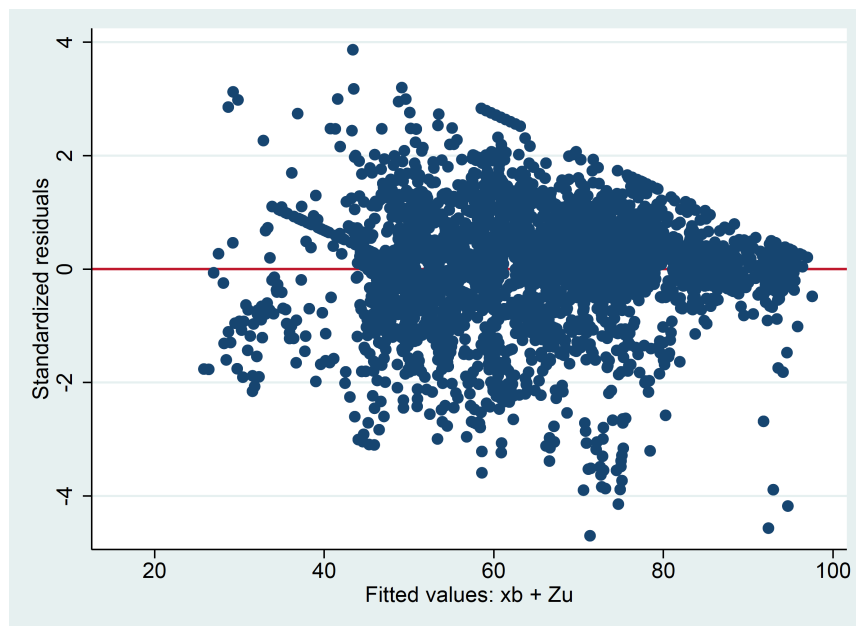


Figure K7.4.4

Scatter Plot of (Standardized) Residuals and Predicted/Fitted Values for End-of-Day Measures – Well-Being

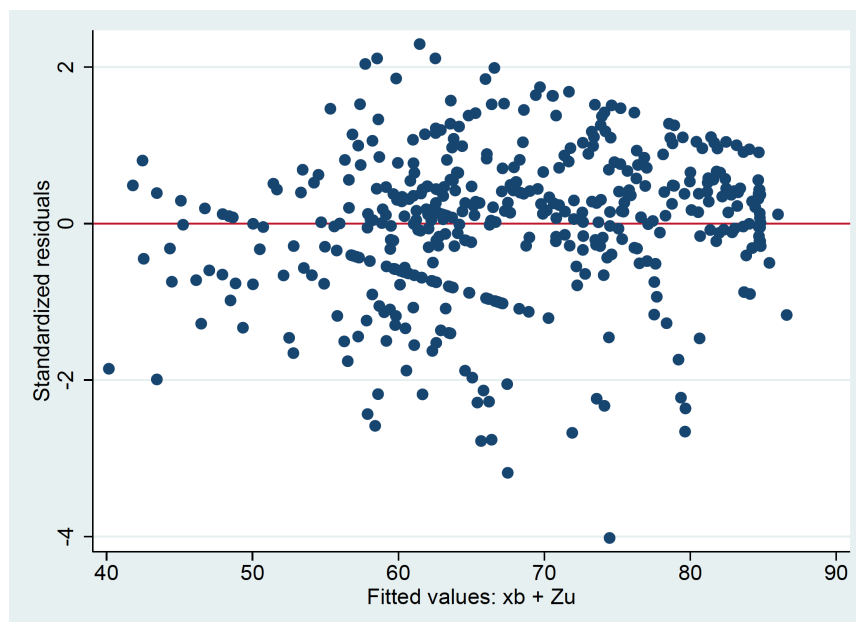


Figure K7.4.5

*Scatter Plot of (Standardized) Residuals and Predicted/Fitted Values for End-of-Day Measures –
Ability to Distance From Negative Stimuli*



Figure K7.4.6

*Scatter Plot of (Standardized) Residuals and Predicted/Fitted Values for End-of-Day Measures –
Ability to Get Affected by Positive Stimuli*

